

SEMÂ

Technical requirements

STAGE

The stage, optimal size 12m (width) x10m (depth), minimal 10mx10m, will be covered by a clean white dance-carpet, size 12mx 9m, minimal 10mx9m, framed by 3 layers of black dance-carpet (side and back).

Stage will be equipped with a black box (back drop and black sides in black velvet).

The show is performed by 8 dancers and 2 musicians who are normally placed stage left, or back of the stage, depending on stage size.



SCHEDULE AND STAFF NEEDED

Setting up day	9am to 12:30am	Lights and set	1 machinist 1 light technician
	2pm to 6pm	Light focus	1 light technician 1 electrician 1 sound technician
	6pm to 8pm	Light focus if needed	1 light technician
1st show's day	9am to 12:30am	Light focus	1 light technician 1 machinist
	11am to 12am	Sound check	1 sound technician
	2pm	Warm up / rehearsals company	1 sound technician
	4pm to 6pm	Rehearsals	1 sound technician 1 light technician
	?h	Stage cleaning	
	?h	Show Time	1 light technician 1 sound technician
		Getting out after the performance (1 hour)	1 light technician 1 sound technician 1 machinist

LIGHT

- 1** Light Desk with memory
- 48** channels of 2kW
- 10** Plan convexe (PC) 2kW
- 21** Par 64 220v. CP 62
- 7** Par 64 220v. CP 60
- 4** Profile spots 25°/50° 1 KW (FOH)

+ Hazer machine

Colours gels at company's charge



1 percussionist and 1 electronic musician are placed stage left, or back of the stage, depending on stage size

SOUND

Equipment provided by the theatre:

A digital mixing desk (to be able to adjust the volumes of the far, front and subs)

Minimum 12 inputs and 8 outputs + stereo

A public address system adapted to the venue

2 DI Boxes

1 bass drum microphone (shure beta 52 or similar)

3 shure sm57 or similar

1 akg c414 or similar

1 shure sm58 or similar

7 stage monitors

1 big microphone stand

5 small microphone stand

BACKLINE

Equipment provided by the theatre:

Professional and good quality drum elements: no colours drums, black or grey please

1 20" bass drum + pedal (type DW) **1** 14" snare drum

1 Hi Hat and snare hardware + **2** cymbal stands

1 Drum Stool

3 black stools for tablas (approx. 35 large x 45 high) and **1** black small table or box for percussion accessories (approx. 45 l x 45 h)

1 drum carpet

1 black table + chair for computer (approx. 100 l x 80 h)

DRESSING ROOMS

3 dressing rooms with mirrors and lights.

10 bottles of mineral water per day in the theatre, coffee, milk and small catering for all the company on performances days (fruits, dried fruits, chocolates etc.).

STAGE CLEANING

Staff and equipment to clean the stage, after the light focus and before the show.

COSTUMES

A dresser and material for ironing in case of 1 show

Wash machine (washing and ironing costumes in case of 2 shows)

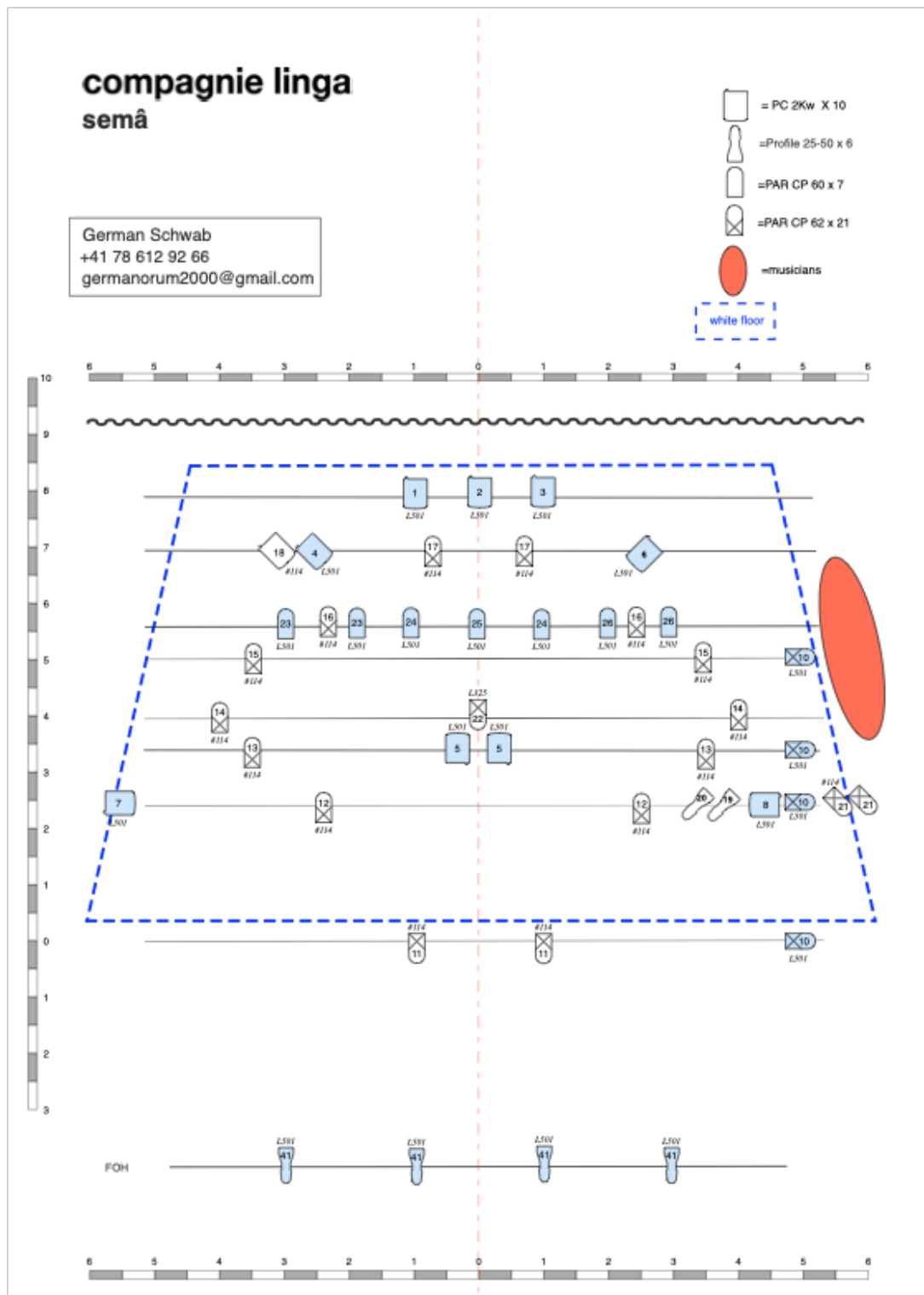
The show might be adapted to different stages

For any questions, please contact our tour technician

German Schwab
Mail: germanorum2000@gmail.com

Compagnie Linga
L'Octogone ,Théâtre de Pully
Av. de Lavaux 41
CH-1009 Pully
Tél : + 4121 721 36 03
info@linga.ch

Plan stages 12m wide or more



Plan stages 10m wide

